

## Technical Service Handbook

VIN: **VSSZZZ5F**xxxxxxxx

Sales code: **5F15IX**

Engine code: **DACA**

Registration number:

Username: **erwin**

Model year: **2019**

Model description: **LEON 1.5 TSIFR 5d96 DQ9M6**

Gearbox code: **SEL**

Final drive code:

Service advisor name:

### Basic filtering of vehicle description

Brand	Model year	Sales model	Engine code	Gearbox code	Final drive code
S	2019	5F% - LEÓN (5F), EA211 1,5	DACA	%	%

### Technical product information

Transaction No.: **2050266/10**

2470: Jerking while warming up when accelerating/releasing accelerator (only 1st to 3rd gears - EA211evo 1.5 I TSI)

Release date: 15-Nov-2019

### Customer statement / workshop findings

Item no./Revision no.:	Modification type:
2050266/10	Modification in: <ul style="list-style-type: none"><li>• <b>Measure.</b></li></ul>
<b>Warning:</b> <p>The content of this table will not change if the reason for the following revision is only due to changes in the TPI heading data.</p>	

#### Customer statement:

- The engine/vehicle jerks when starting from standstill (clutch closed).

*and/or*

- The engine jerks slightly when accelerating/releasing the accelerator while warming up (until the coolant has reached a temperature of approximately 70 °C) driving in 1st to 3rd gear:

#### Workshop findings:

- One or both customer claims can be reproduced.

### Technical background

Software adaptation in the engine control unit.

### Production change

---

## Measure

Should the customer make a claim, once the anomaly has been confirmed, the repair procedure below must be followed:



### Warning:

Consult the SEAT Repair Manual in order to carry out the procedure correctly and to know which tools and equipment to use and their reference.

### Engine control unit software update

Update the engine control unit software according to the following table:



### Warning:

The software versions included in the annex table correspond to the versions in force at the time that this TPI is published. There may be some discrepancies due to possible later updates. The version indicated in the column, "Version of new software", or later must be used.

### ATECA (KH7) model

Engine	Original part reference	Original software version	New part reference	New software version	SVM test code
1.5 TSI 110kW DADA	05E 906 018 R	6090, 7421	05E 906 018 R	9832 or higher	3473
	05E 906 018 S	6095, 6241	05E 906 018 S	9757 or higher	3473

### Model IBIZA (KJ1)

Engine	Original part reference	Original software version	New part reference	New software version	SVM test code
1.5 TSI 110kW DADA	05E 906 018 AB	6086, 7416	05E 906 018 AB	9763 or higher	3473
	05E 906 018 D	4189, 4629, 4955, 5181, 5459, 6021, 6797	05E 906 018 D	9754 or higher	3473

### Model ARONA (KJ7)

Engine					SVM test code
--------	--	--	--	--	---------------

	Original part reference	Original software version	New part reference	New software version	
1.5 TSI 110kW DADA	05E 906 018 J	4473, 5162, 5462, 5527, 5570, 6022	05E 906 018 J	9755 or higher	3473
	05E 906 018 AC	5692, 6093	05E 906 018 AC	9762 or higher	3473

#### Model TARRACO (KN2)

Engine	Original part reference	Original software version	New part reference	New software version	SVM test code
1.5 TSI 110kW DADA	05E 906 018 AF	6085, 7176, 7418	05E 906 018 AF	9834 or higher	3473

#### Model LEÓN (5F)

Engine	Original part reference	Original software version	New part reference	New software version	SVM test code
1.5 TSI 110kW DADA	05E 906 018 AL	6084	05E 906 018 AL	9692 or higher	3473
1.5 TSI 96kW DACA	05E 906 018 AK	5688, 6323	05E 906 018 AK	9602 or higher	3473



#### Warning:

Before updating the software, please bear in mind and follow the points below:

- **Offboard Diagnostic Information System (ODIS):** The diagnostics equipment must be updated using the latest available version. There should be no pending update.
- Connect a SEAT-approved battery charger to ensure the power supply of the vehicle.
- Disconnect the consumers (air conditioning, seat heating, lights, etc.).
- Connect the diagnostics equipment to the vehicle.



#### Note:

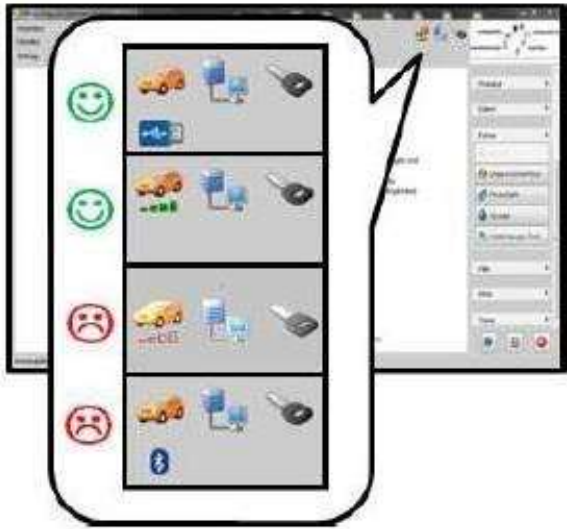
The flash update can be done both with a USB cable and via WiFi if the signal is strong enough.

If the WiFi signal is not strong enough a note is displayed (see Figure 1), and the USB cable must be used.

The use of Bluetooth is still currently not allowed.

Before connecting the USB cable, remove the diagnostics unit radio communication terminal!

If the USB cable is connected while the radio communication terminal is attached, the communication will be established via Bluetooth.



**Figure 1:** Example of the information icons when there is sufficient or insufficient signal via WiFi / Bluetooth.

The update procedure can be found at the following path:

- **Software Version Management (SVM) / Adapt software.**



Warning:

When performing the flash procedure, event entries may sometimes be recorded in other control units once the update is complete. In this case, remove the ignition key (wait a few minutes until the CAN switches to standby mode), insert the ignition key again and delete the event entries that have sporadically passed.

## Warranty accounting instructions

Service ID / Anomaly / Manufacturer: 2470 / 0041 / ...

Work item No.	Description of work item	Time Units (TU)
01 50 00 00	Guided Fault Finding/guided functions	According to diagnosis protocol. 1)
27 06 89 50	Confirm battery voltage	10 1)

1) The times indicated are only applicable to this TPI. When submitting the warranty application, please include the number of the TPI used to streamline the process.



Note:

- The work times published in this TPI correspond to the TUs valid on the date of completion of this publication. The time units (TU) may vary slightly due to a subsequent update of the Catalogue of Work Items. The times currently in force according to the Catalogue of Work Items are valid, except for the work items entered manually (... 99)."
- The time for the Offboard Diagnostic Information System (ODIS) is not included in the times specified below. The time must be invoiced separately using the Offboard Diagnostic Information System (ODIS) diagnostics equipment form.

## Parts information



Warning:

The replacement of parts under this concept is not recommended and may be considered unjustified.