

# Power Evaluation Sheet

FULL BOOST PERFORMANCE | Hasolel 6 Holon, Holon 0

Generated: 02/06/2022 | Tested: 02/06/2022 12:3:48 Israel Daylight Time

Make: SEAT

Model: Ibiza 1.5 TSI

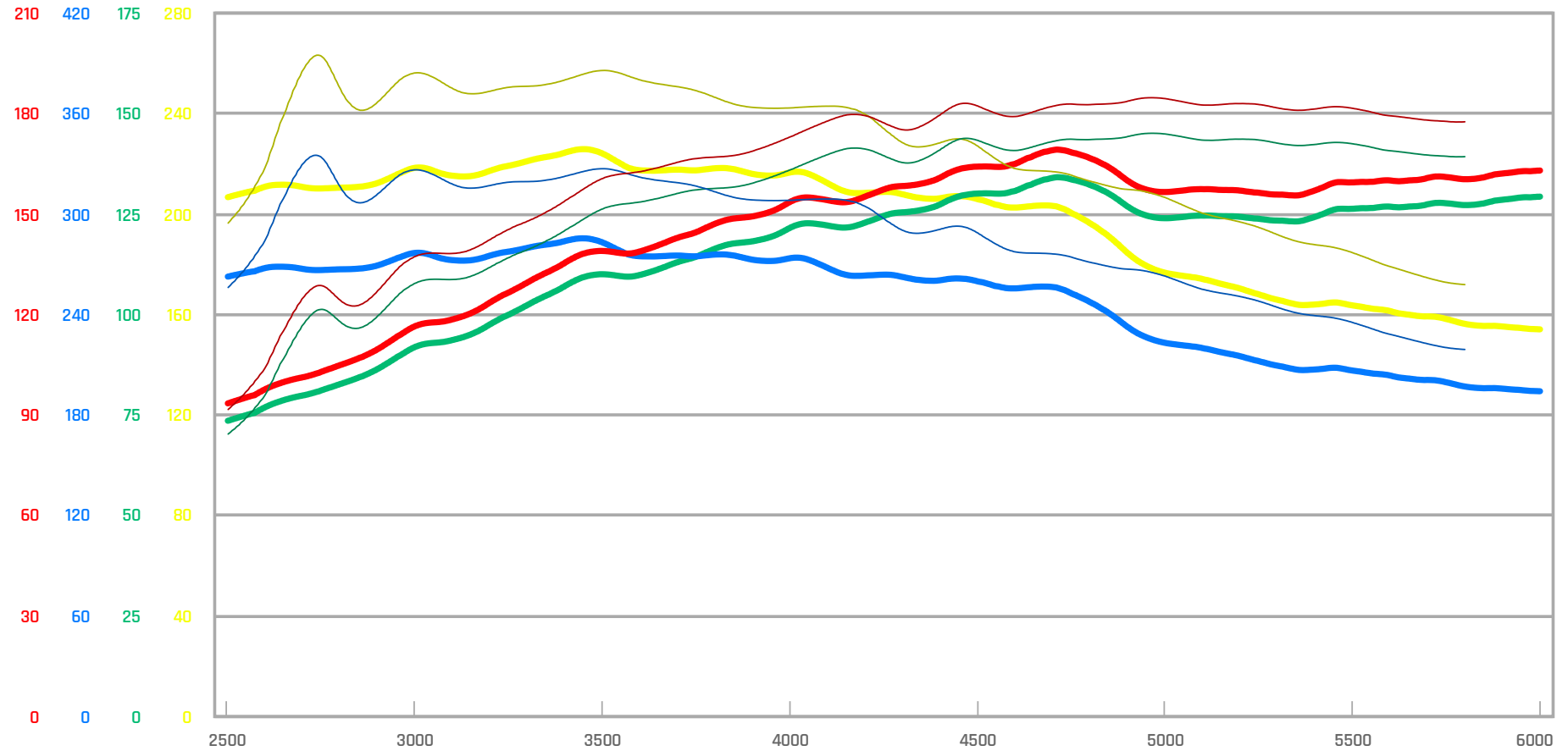
Evo FR

Year: 2022

Correction Factor:

J1349 (1.00)

## Results



Channel	Average	Peak	Prev Peak	Delta
Torque SAE	193.80 N-m	228.29 N-m	284.66 N-m	-56.37 N-m
HP SAE	116.30 HP	135.47 HP	145.83 HP	-10.36 HP
Crank Torque SAE	244.90 N-m	288.67 N-m	362.19 N-m	-73.52 N-m
Crank HP SAE	146.91 HP	170.90 HP	185.66 HP	-14.76 HP